

LOWER GROUND

Male and Female Changing Facilities

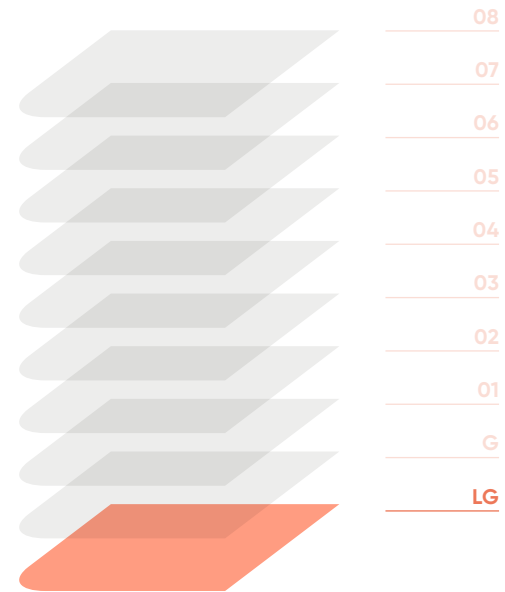
10 Showers

154 Lockers

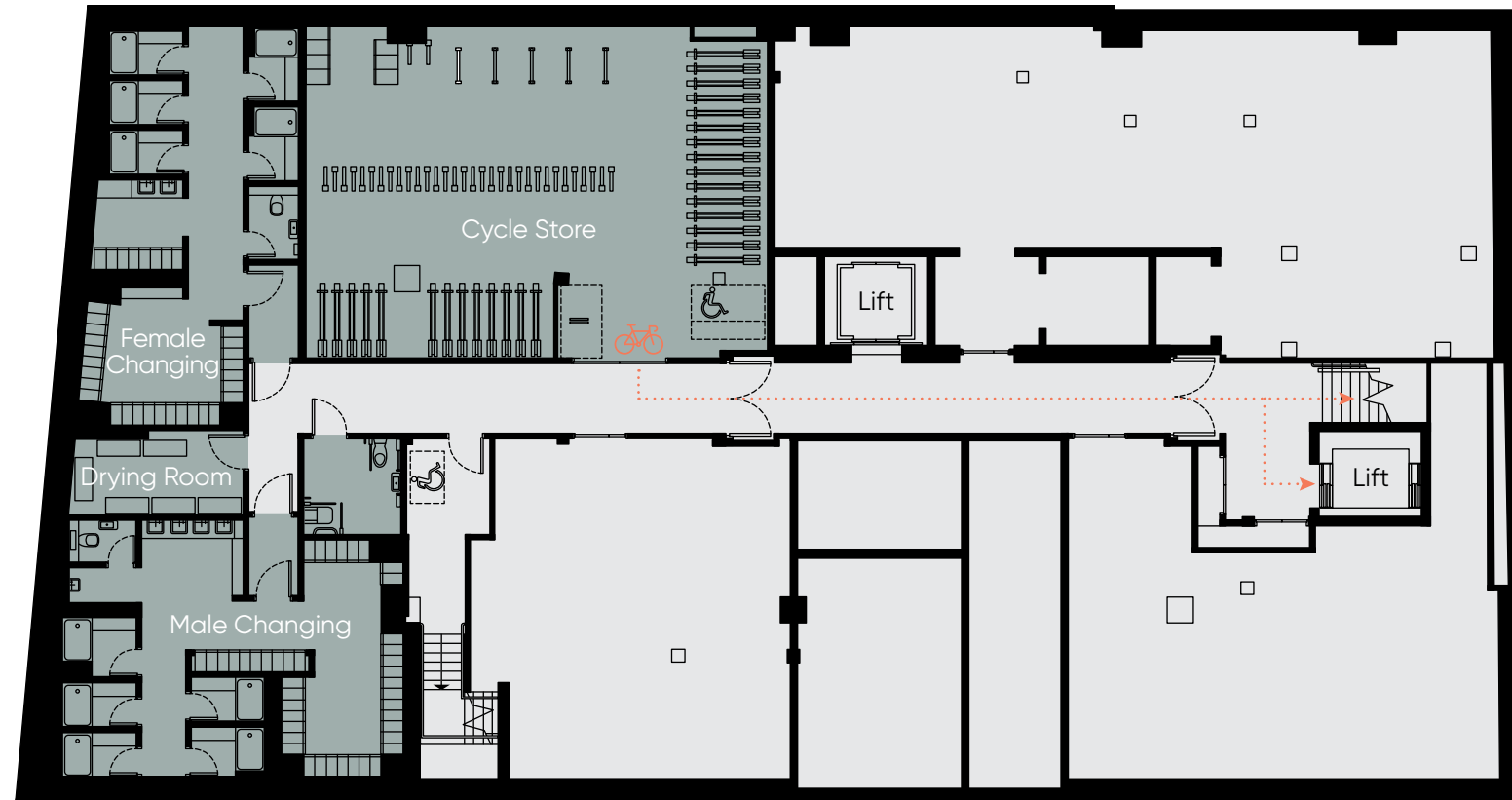
Cycle Repair and

Electric Bike Charging Station.

121 Cycle Spaces



Marble Arch

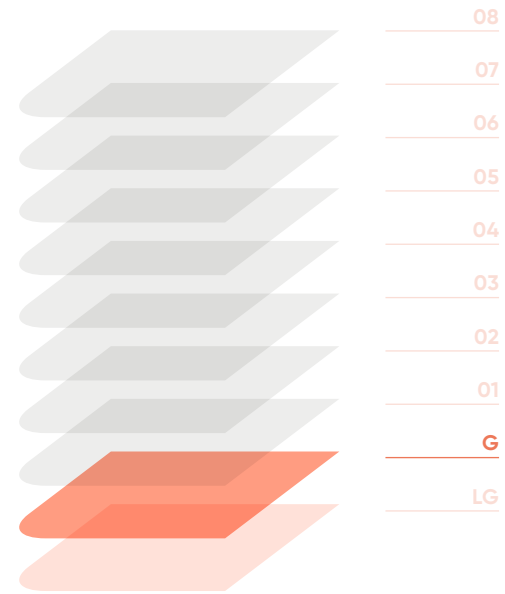


Great Cumberland Place



GROUND

Reception/Café 1,905 sq.ft. 177 sq.m.



Marble Arch



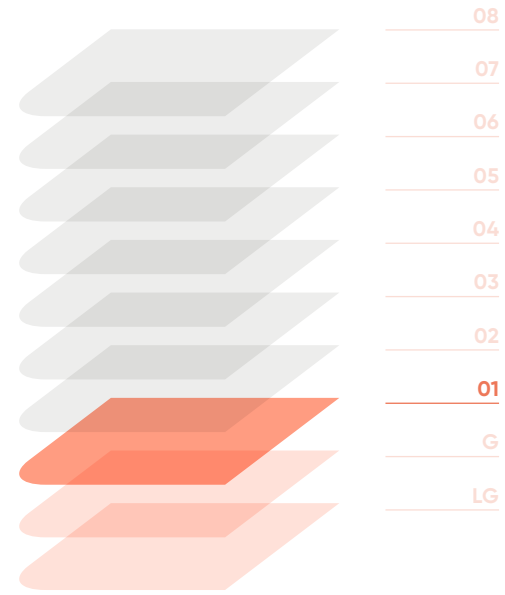
Great Cumberland Place



■ Reception/Café ■ Retail ■ Core Areas

FLOOR 01

Office 3,013 sq.ft. 280 sq.m.



Marble Arch



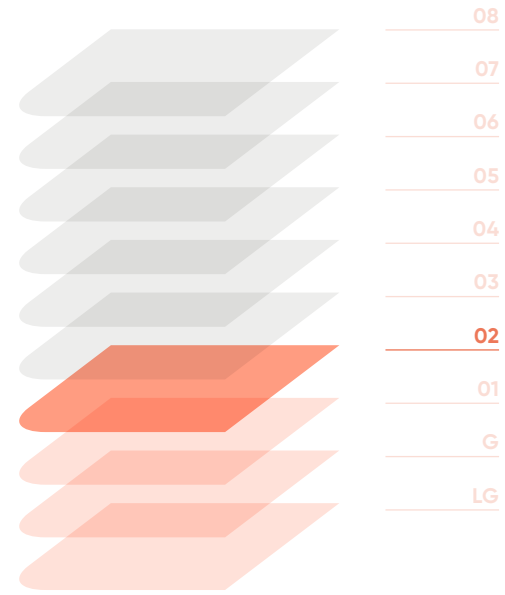
Great Cumberland Place



Office/Retail Retail Core Areas

FLOOR 02

Office 8,393 sq.ft. 780 sq.m.



Marble Arch



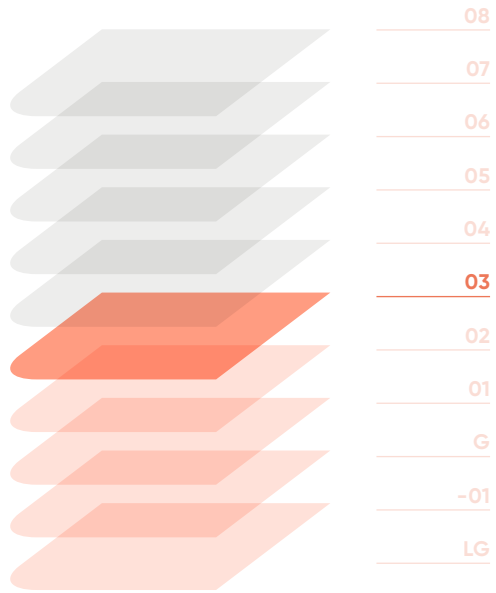
Great Cumberland Place



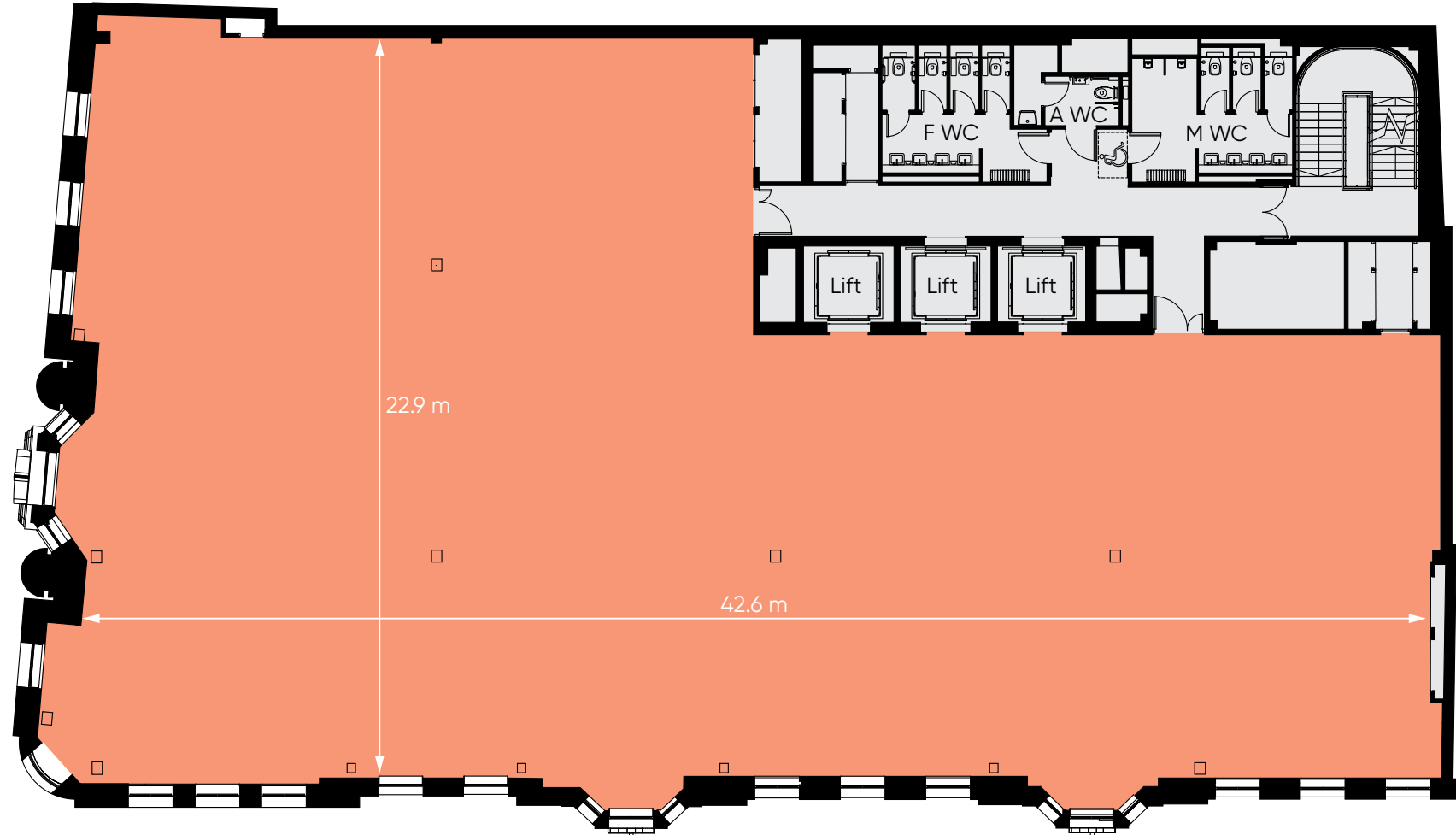
Office Core Areas

FLOOR 03

Office 8,371 sq.ft. 778 sq.m



Marble Arch



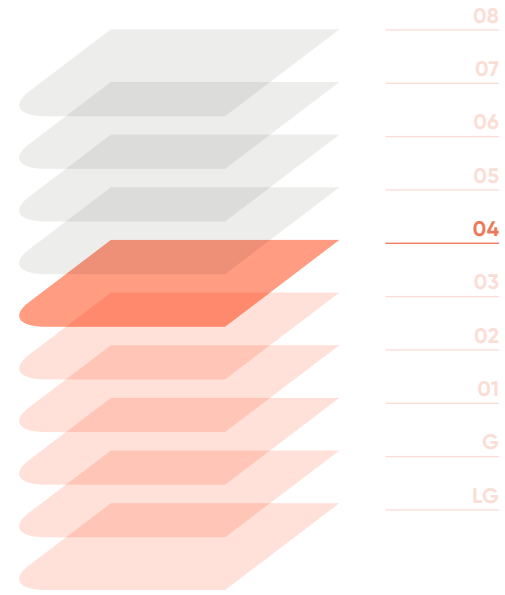
Great Cumberland Place



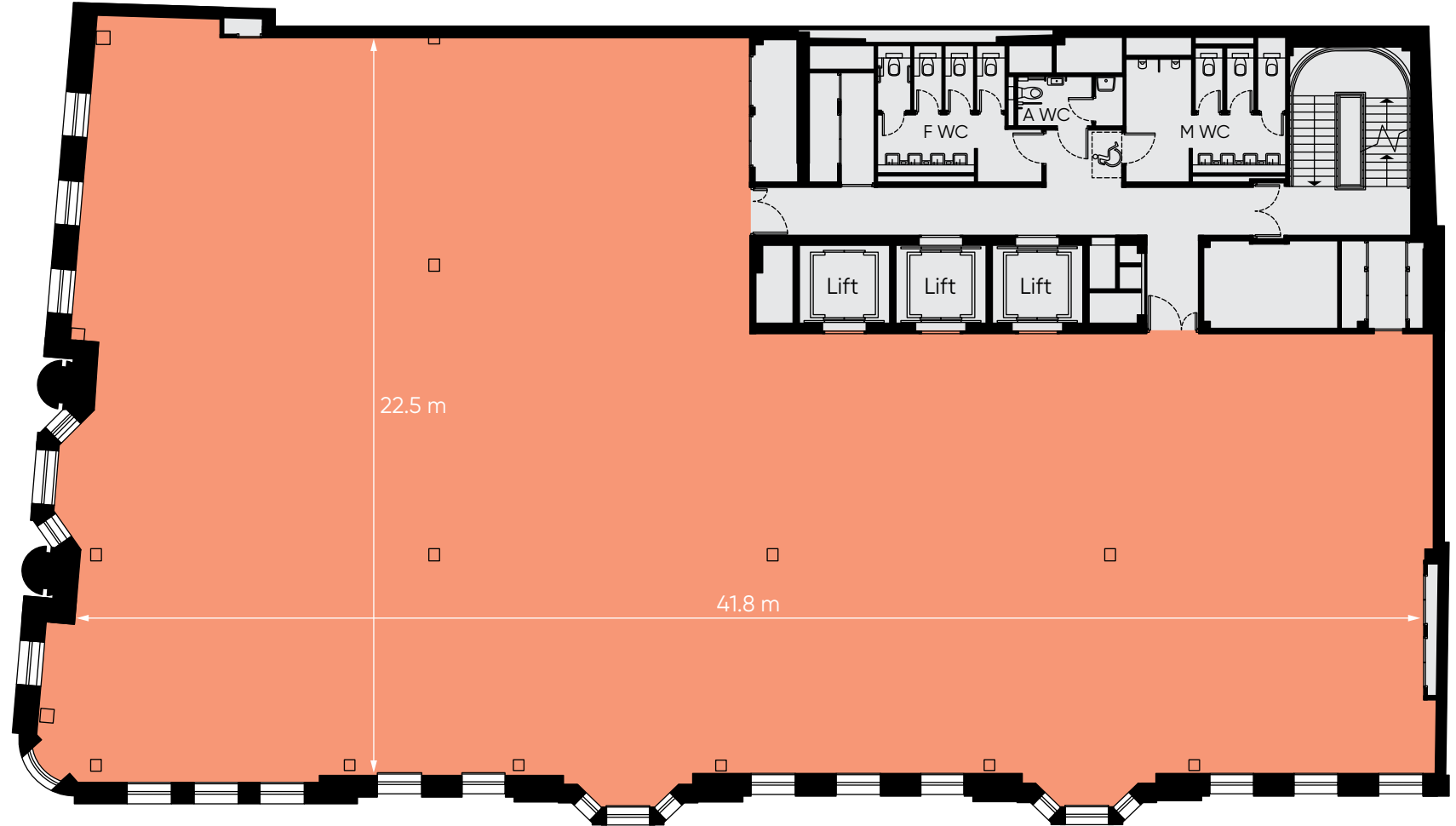
Office Core Areas

FLOOR 04

Office 8,384 sq.ft. 779 sq.m.



Marble Arch



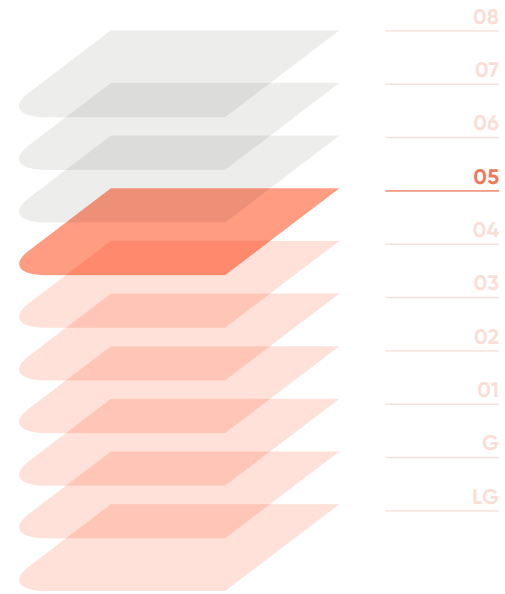
Great Cumberland Place



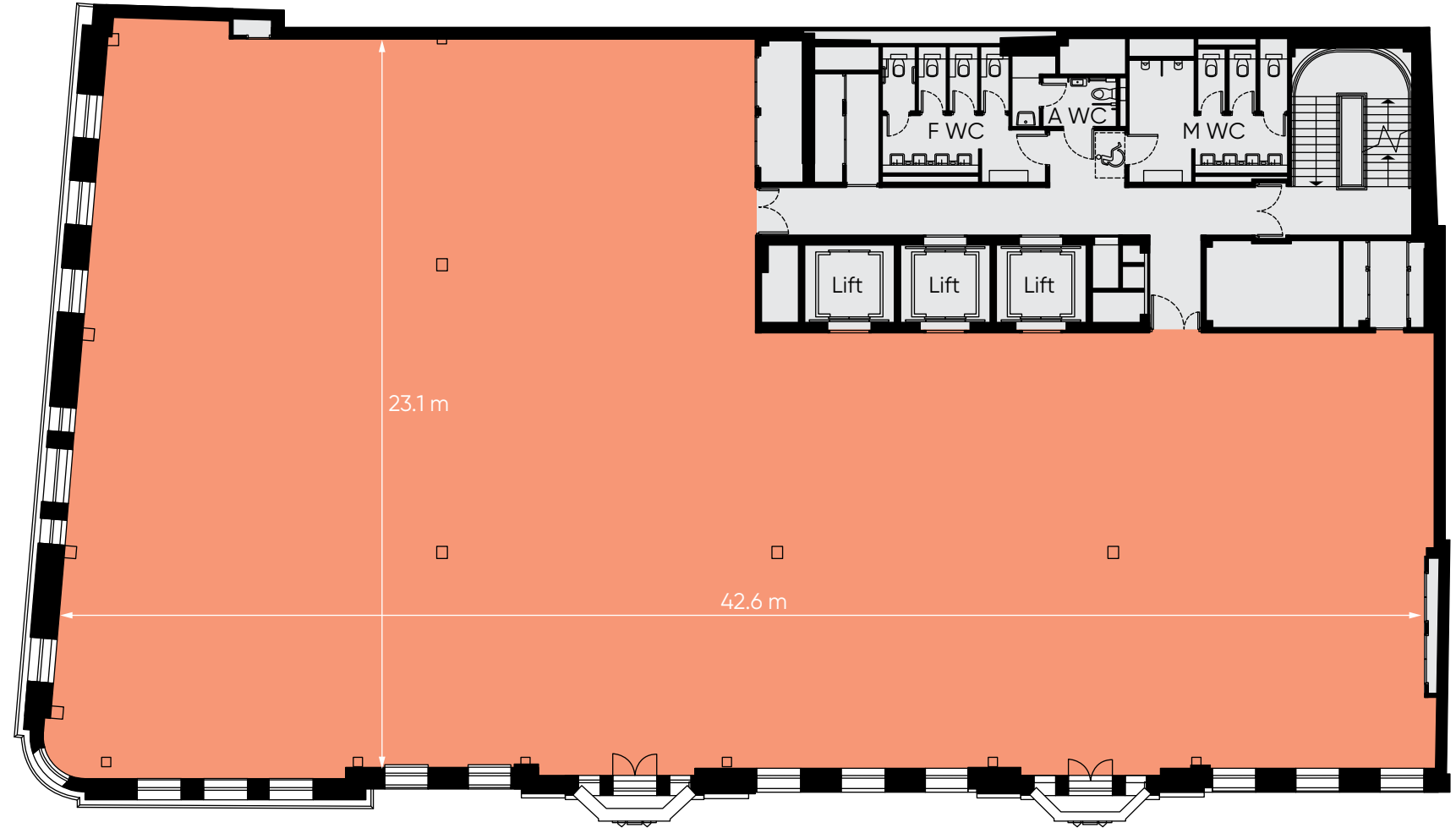
Office Core Areas

FLOOR 05

Office 8,353 sq.ft. 776 sq.m.



Marble Arch



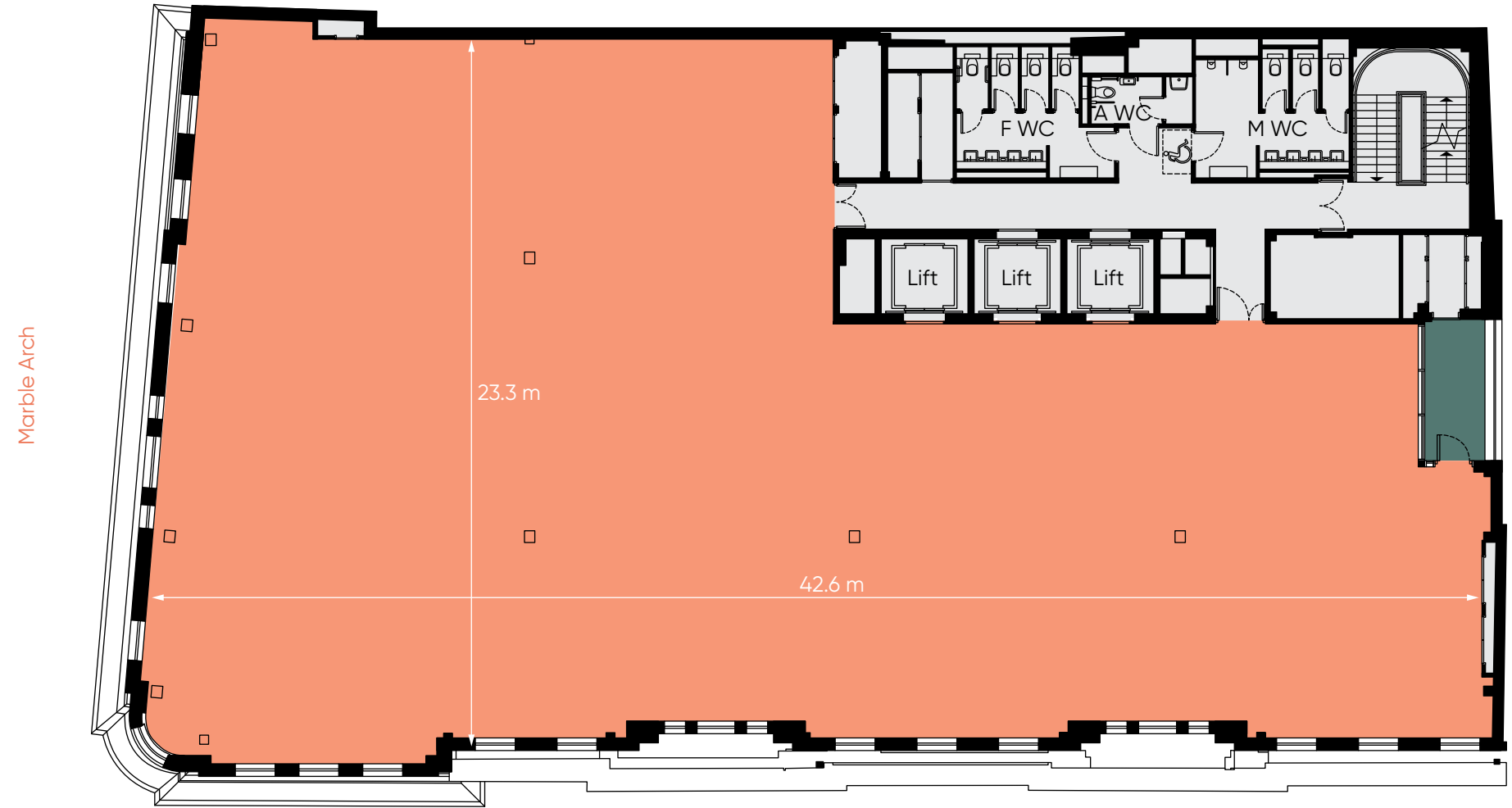
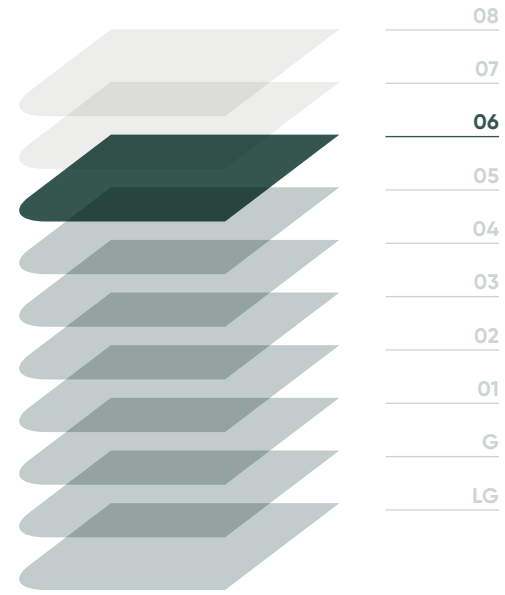
Great Cumberland Place



Office Core Areas

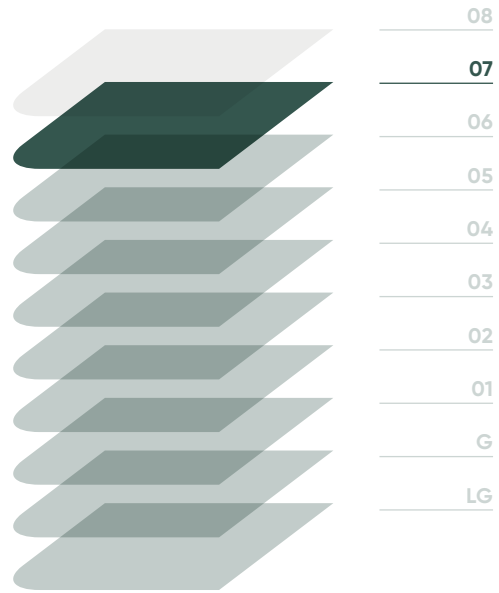
FLOOR 06

Office	8,119 sq.ft.	754 sq.m.
Terrace	95 sq.ft.	8.8 sq.m.



FLOOR 07

Office	7,586 sq.ft.	705 sq.m.
Terraces	226 sq.ft.	21 sq.m.



Marble Arch

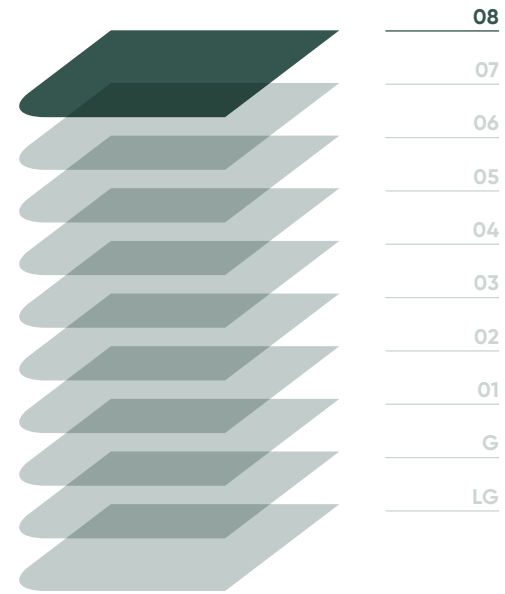


Great Cumberland Place



FLOOR 08

Office	5,207 sq.ft.	484 sq.m.
Terraces	635 sq.ft.	59 sq.m.



Marble Arch



Great Cumberland Place

